



2022-2023 5th Grade Summer Project

ELA/Reading:

Read the book "The Lemonade War". This can be done any way you choose. You can practice sustained silent reading, partner read with an adult, listen to the book on tape while following along, or listen to it while you are on a summer road trip! Please complete the comprehension and corresponding activities for each group of two chapters. Finally, choose a project from the choice board to accompany your reading.

Math:

You will have a series of questions about fractions, decimals and conversions to complete that are related to "The Lemonade War". (You may use the FSA Reference Sheet for the conversions if needed).

Science:

Use the power point to read and learn a bit about biomes. Choose one you are interested in researching further. Once you have chosen one, create a poster or brochure for the biome you chose. Instructions and samples are attached.

Theme

Directions: Complete the "theme" graphic organizer below for chapters 5-6 in *The Lemonade War*. Identify the big idea or topic, what the characters did or said to demonstrate the big idea and the message you took from the chapter.

Chapter 5:
Big Idea or Topic

What the characters did or
said to demonstrate the big
idea:

Message:

Chapter 6:
Big Idea or Topic

What the characters did or
said to demonstrate the big
idea:

Message:

Dear Alice...

Directions: Imagine you are either Jessie or Evan and write a letter to "Dear Alice" a newspaper advice columnist requesting advice on how to make up with your sibling. Then write the letter that Alice would write in return.



Dear Alice,

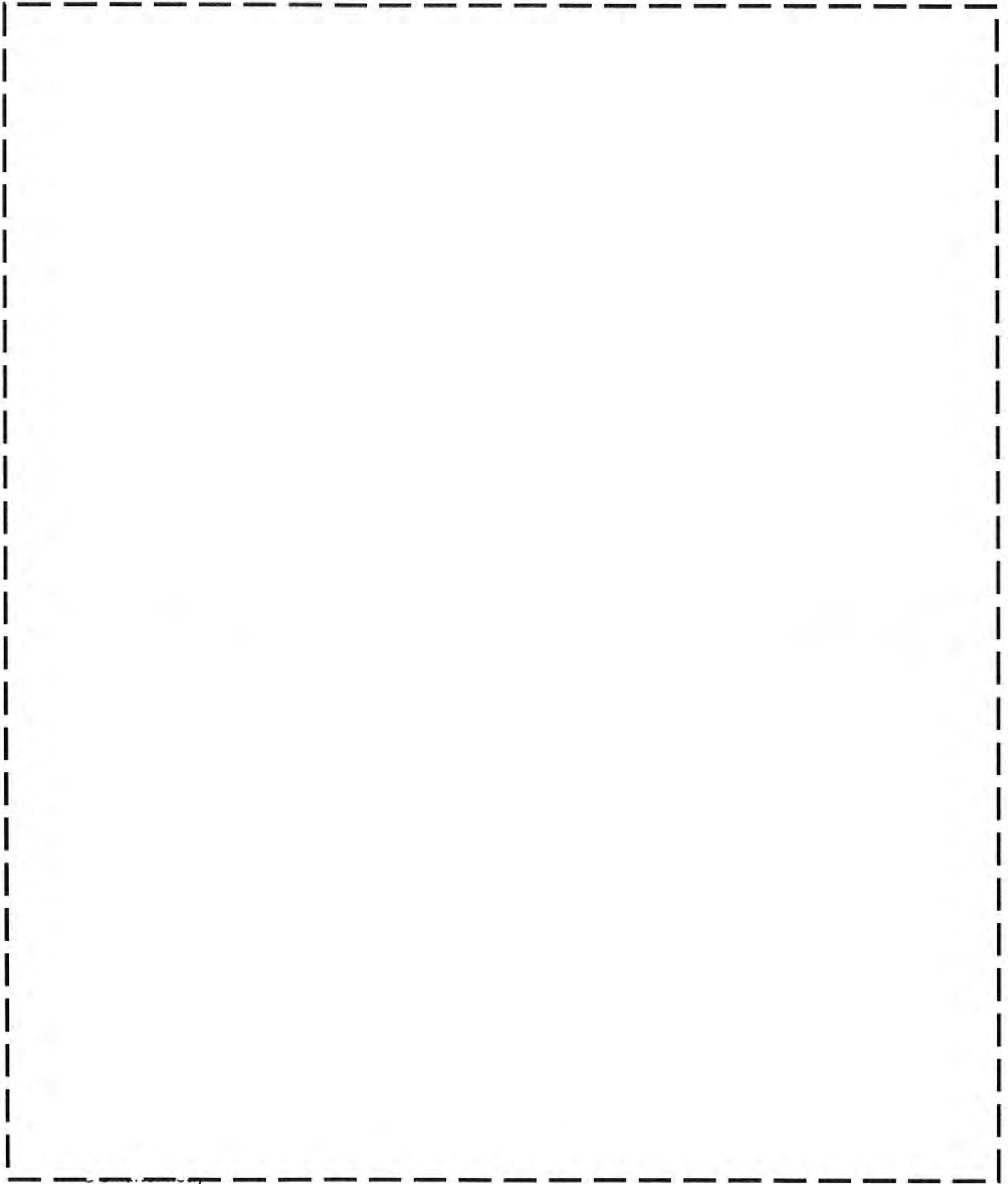
Yours Truly,

Dear

Yours Truly, Alice

Incentives

Directions: Create a poster below for Jessie and Megan advertising their new "incentives" in Chapter Eight trying to lure new customers. Make it decorative and neat.

A large rectangular area defined by a dashed line, intended for creating a poster. The area is empty, providing space for the student to draw and write their advertisement.

Summary

Directions: Fill in the chart below to summarize the events in Chapters 7-8. Recognize the four most important details in these chapters, then write a thorough summary of the chapters.

[illegible]

Summary

Inferences

Directions: Brainstorm the three most important events that took place in Chapters 11-12. Then write how the characters in the chapter reacted to each of the three events. Then record an inference you could make about each event based on the reactions of the characters.

what happened in the story?	clues from character actions, dialogue, and feelings	I can infer:

Can You Believe What She Did?

Directions: Pretend Evan and Jessie had a text message conversation after he found out what she had done to his lemonade. Write that pretend text message conversation below.



Evan: _____

Jessie: _____



Evan: _____

Jessie: _____



Evan: _____



The Lemonade War: Figurative Language

Directions: Explain how each form of figurative language below could be related to an event in *The Lemonade War*.

1. "Blood is thicker than water":
2. "A Mountain out of a Molehill":
3. "Get out of Hand":
4. "Pound the Pavement":
5. "Step up your Game":
6. "Method to Madness":
7. "Tar Someone with the Same Brush":
8. "Freak Out":

Joint Venture

Suppose the boys decide to buy smaller cups to increase their profit. They keep the price at \$0.50 per cup but this time their cups only hold 6 ounces. They fill new pitchers of lemonade. Each pitcher holds 72 ounces.

Help the boys calculate their earnings by completing the table.

Number of Pitchers Sold	Number of Cups sold	Earnings
3		
	48	
6		
	120	

There are times of the day when sales increase. They are called peak hours. In a hot summer day, mid-day hours would allow for more sales. Today they sold 125 cups of lemonade.

Let's use our fraction skills to complete the table below.

Time Period	Number of Cups Sold	Fraction	Simplest Form
10 AM-11 AM	10	10/125	
11 AM-12 NOON	15		
12 NOON-1:00 PM	25		
1:00 PM-2:00 PM	45		
2:00 PM-3:00 PM	30		



Partnership

Jessie needs a way to increase sales. She forms a partnership with Megan.

Jessie pulls out her lock box to use the money she has saved to buy supplies for their lemonade stand business.

Below is the number of coins in her lock box. How much money does Jessie have?

Coin Type	Number of Coins	Dollar Amount
Quarters	14	
Dimes	5	
Nickels	3	
Pennies	27	
Total Dollar Amount		

Provide a different coin combination than the one shown on the table below that would yield the same dollar amount that Jessie has in her lock box.



L E M O N A D E



Partnership

Jessie and Megan take their money to purchase frozen cans of lemonade. Each can of lemonade yields 64 ounces.

How many 8 ounce cups can they get from each can of lemonade? _____

Let's look at earnings for different scenarios.



Price per cup of lemonade	Number of cups sold	Earnings
\$0.25	82	
\$0.35	75	
\$0.45	65	
\$0.50	60	

Megan and Jessie made \$78.75 selling lemonade yesterday.

Let's look at the number 78.75

Write it in word form: _____

Write it in expanded form: _____

If the number 78.75 is divided by 100, the number 8 in the resulting product is in the _____ place and has a value of _____

In which of the following numbers is the digit 8 ten times more than the value of the digit 8 in 78.75?

- a) 79.85 c) 78.95
- b) 85.34 d) 34.68

Going Global

This term is used when a business expands beyond your immediate area.



Jessie has the bright idea of franchising her business. That means when you give the right to use your company's logo and sell your products to other people.

She contacts other girls in the neighborhood to sell her lemonade and they would have to pay her a portion of their earnings but Jessie has to provide them with all supplies.

Jessie and Megan go shopping for supplies again. They need to buy enough supplies for all their franchisees. Complete the table to see how much they spend.

Item	Cost per Item	Number of Items	Total Cost
Frozen Lemonade	\$1.25		\$65
Paper Cups	\$2.85		\$14.25
Napkins Pack	\$3.75		\$11.25
Total Spent			



Biomes of the World

A journey across the Earth
in 30 minutes...

1

What biomes are on Earth?

- Scientists can't agree on exactly how many biomes Earth has! One scientist pictures the biomes like this:



4

Let's take a closer look
at some specific biomes...

7

What in the world is a biome?!

- Scientists have developed the term **Biome** to describe areas on the earth with similar climate, plants, and animals.

2

The North Western Hemisphere

- Let's take a closer look at where we live...



5

Aquatic Biomes:

- Water:** Submerged
- Temperature:** Varies
- Soil:** None
- Plants:** Aquatic Plants (seaweed)
- Animals:** Fish, Shelled fish, invertebrates (animals with out backbones), select mammals.

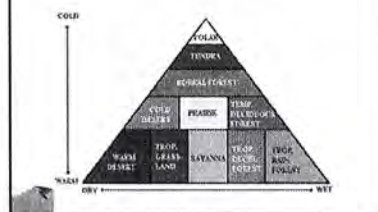
8

How is a biome different than an ecosystem or a habitat?

- Ecosystem:** a system formed by the interaction of a community of organisms with their physical environment.
- Habitat:** the area or environment where an organism or ecological community normally lives or occurs

3

Another way to look at it...



6

Aquatic Biome



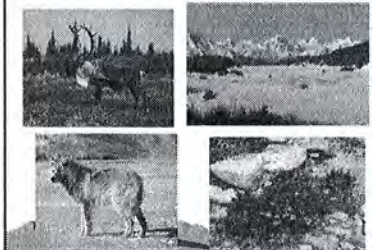
9

Rainforest

- **Water:** Very wet
- **Temperature:** Very warm
- **Soil:** Poor, thin soil
- **Plants:** Many plants (trees, flowers, shrubs, etc.)
- **Animals:** Many animals (birds, mammals, reptiles, insects, etc.)

10

Tundra



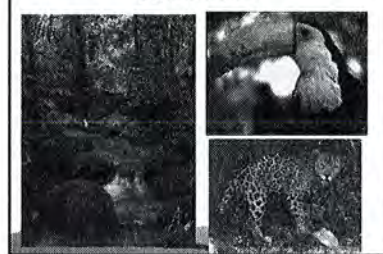
13

Grassland

- **Water:** Wet season, dry season
- **Temperature:** Warm to hot (but often has a cold season)
- **Soil:** Fertile soil
- **Plants:** Grasses (few or no trees)
- **Animals:** Many mammals, birds, insects, arachnids, etc.

16

Rainforests



11

Taiga

- **Water:** Adequate
- **Temperature:** Cool (year round)
- **Soil:** Poor, rocky soil
- **Plants:** Conifers (pines)
- **Animals:** Many mammals, birds, insects, arachnids, etc.

14

Grassland



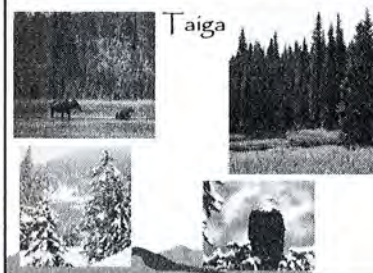
17

Tundra

- **Water:** Dry
- **Temperature:** Cold
- **Soil:** Permafrost (frozen soil)
- **Plants:** Lichens and mosses
- **Animals:** Migrating animals, and small rodents

12

Taiga

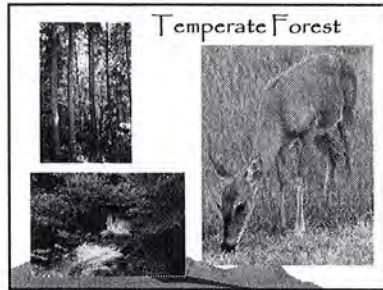


15

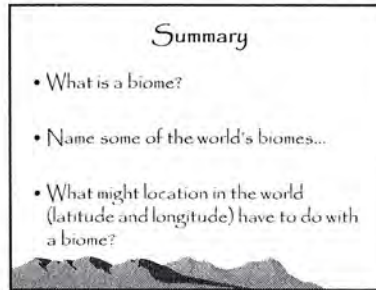
Temperate Forest

- **Water:** Adequate
- **Temperature:** Cool season and warm season
- **Soil:** Fertile soil
- **Plants:** Deciduous trees, shrubs, ground cover
- **Animals:** Many mammals, birds, reptiles, insects, arachnids, etc.

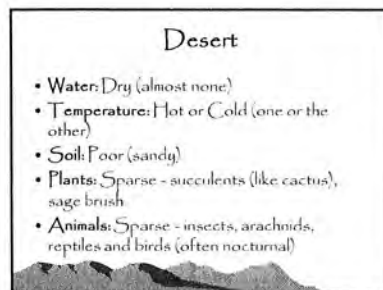
18



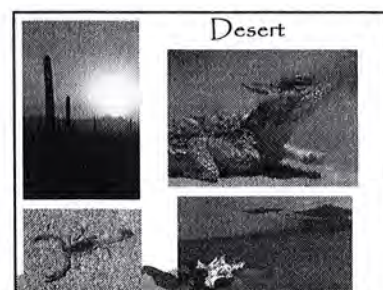
19



22



20



21