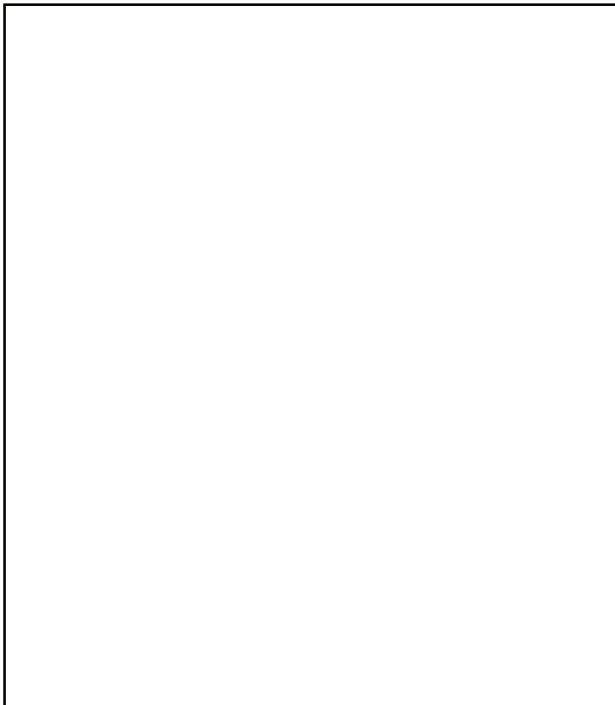


WANTED

Bacteria Scientific Name


Bacteria or Disease Common Name

Symptoms of Disease



Route of Infection

Drawing of bacteria cells. ^



Natural Reservoir: Places bacteria can be found.

Organisms the bacteria infects.

Treatments for the disease and symptoms of the disease.

Duration of the disease. (How long does the disease last?)

Disease prevention.

Does the disease have a vaccine? How is it administered?

Victims of the disease, or pictures of what the bacteria does to its victims.

Pathogenic Bacteria List

Lysteria

Salmonella Typhi

Chlamydia

Gonorrhoea

Yersenia Pestis

Pertussis

E. Coli 0157:H7

Lyme disease

Syphilis

Diphtheria

Pneumonia

Strep throat

Anthrax

Botulism

Gangrene

Tetanus

Tuberculosis

Typhus

Legionellosis

Staph

Scarlet Fever

Flesh eating bacteria

Cholera

Dysentery

MRSA

Propionibacterium acnes

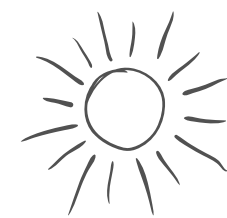
Streptococcus mutans

Helicobacter pylori

Strep throat

BIOLOGY TERM BUILDERS

NAME: _____



BIO

means...

used in these biological terms:

CARDI

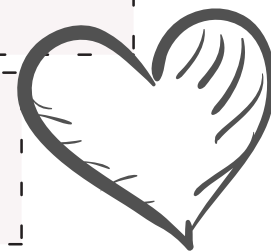
means...

used in these biological terms...

ENDO

means...

used in these biological terms...



MAL

means...

used in these biological terms...

MICRO

means...

used in these biological terms...



POLY

means...

used in these biological terms...

THERM

means...

used in these biological terms...



-CYTE

means...

used in these biological terms...

-ITIS

means...

used in these biological terms...

-LOGY

means...

used in these biological terms...

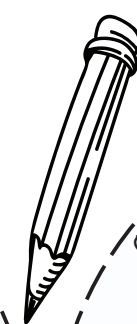
Whatzit Mean?

THERMOCYTE

Propose a definition for this "term" based on the prefix/root/suffix used to build it.

SKETCH IT!

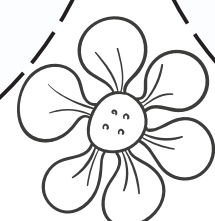
Choose a biological term you used above and sketch it



SKETCH IT!

Choose a biological term you used above and sketch it

biological term



biological term

